

ITGA1 Antibody (Center)
Affinity Purified Rabbit Polyclonal Antibody (Pab)
Catalog # AP8814C**Specification**

ITGA1 Antibody (Center) - Product Information

Application	IHC-P, WB,E
Primary Accession	P56199
Reactivity	Human, Mouse
Host	Rabbit
Clonality	Polyclonal
Isotype	Rabbit IgG
Calculated MW	130848
Antigen Region	727-755

ITGA1 Antibody (Center) - Additional Information**Gene ID** 3672**Other Names**

Integrin alpha-1, CD49 antigen-like family member A, Laminin and collagen receptor, VLA-1, CD49a, ITGA1

Target/Specificity

This ITGA1 antibody is generated from rabbits immunized with a KLH conjugated synthetic peptide between 727-755 amino acids from the Central region of human ITGA1.

Dilution

IHC-P~~1:10~50

WB~~1:1000

E~~Use at an assay dependent concentration.

Format

Purified polyclonal antibody supplied in PBS with 0.09% (W/V) sodium azide. This antibody is purified through a protein A column, followed by peptide affinity purification.

Storage

Maintain refrigerated at 2-8°C for up to 2 weeks. For long term storage store at -20°C in small aliquots to prevent freeze-thaw cycles.

Precautions

ITGA1 Antibody (Center) is for research use only and not for use in diagnostic or therapeutic procedures.

ITGA1 Antibody (Center) - Protein Information**Name** ITGA1

Function Integrin alpha-1/beta-1 is a receptor for laminin and collagen. It recognizes the proline-hydroxylated sequence G-F-P-G-E-R in collagen. Involved in anchorage-dependent, negative regulation of EGF-stimulated cell growth.

Cellular Location

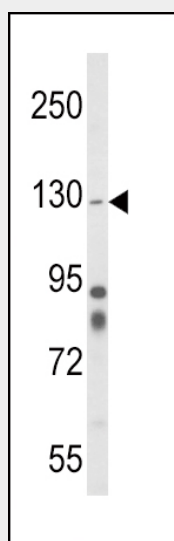
Membrane; Single-pass type I membrane protein.

ITGA1 Antibody (Center) - Protocols

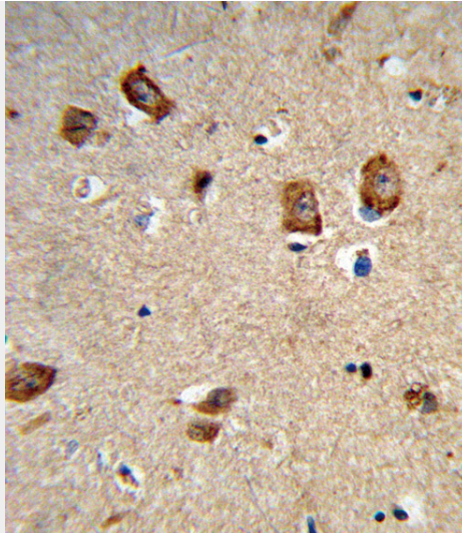
Provided below are standard protocols that you may find useful for product applications.

- [Western Blot](#)
- [Blocking Peptides](#)
- [Dot Blot](#)
- [Immunohistochemistry](#)
- [Immunofluorescence](#)
- [Immunoprecipitation](#)
- [Flow Cytometry](#)
- [Cell Culture](#)

ITGA1 Antibody (Center) - Images



Western blot analysis of ITGA1 Antibody (Center) (Cat. #AP8814c) in mouse cerebellum tissue lysates (35ug/lane). ITGA1 (arrow) was detected using the purified Pab.



Formalin-fixed and paraffin-embedded human brain tissue reacted with ITGA1 Antibody (Center), which was peroxidase-conjugated to the secondary antibody, followed by DAB staining. This data demonstrates the use of this antibody for immunohistochemistry; clinical relevance has not been evaluated.

ITGA1 Antibody (Center) - Background

ITGA1 is the alpha 1 subunit of integrin receptors. This protein heterodimerizes with the beta 1 subunit to form a cell-surface receptor for collagen and laminin. The heterodimeric receptor is involved in cell-cell adhesion and may play a role in inflammation and fibrosis. The alpha 1 subunit contains an inserted (I) von Willebrand factor type I domain which is thought to be involved in collagen binding.

ITGA1 Antibody (Center) - References

Bank, I., et al., J. Clin. Immunol. 11 (1), 29-38 (1991)

ITGA1 Antibody (Center) - Citations

- [Differential expression of sema3A and sema7A in a murine model of multiple sclerosis: Implications for a therapeutic design.](#)